





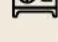



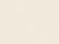



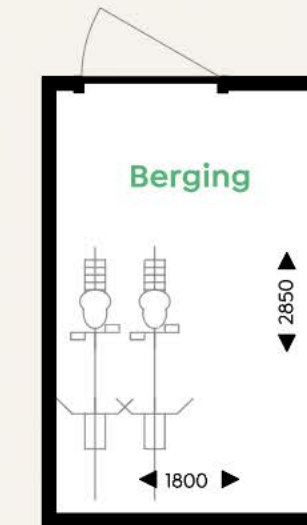
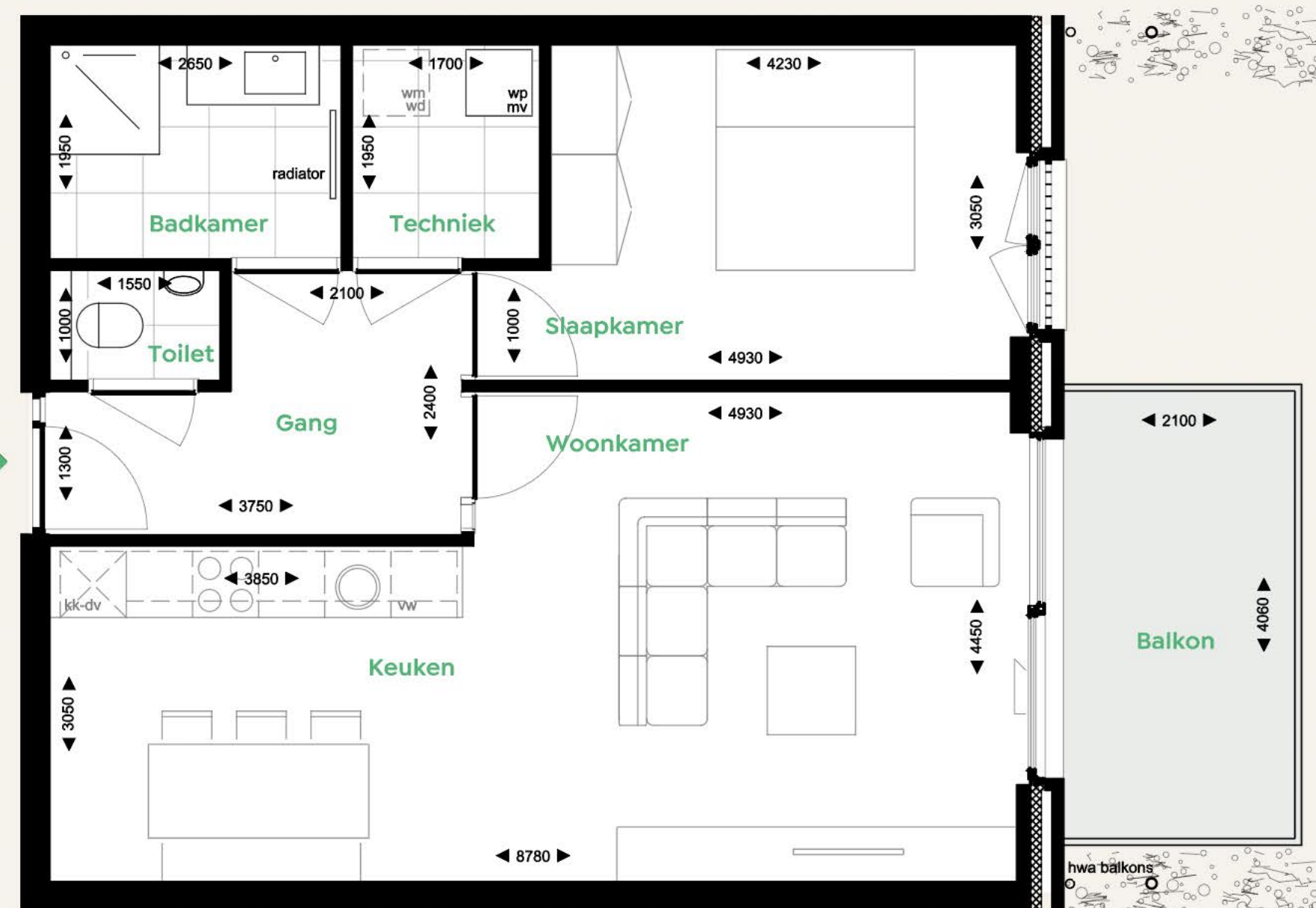
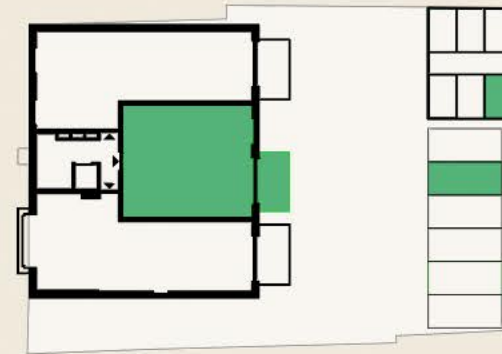
Kom jij  
wonen in  
De Yp?



# Appartement Groot Ypelaardreef 12-B2

2e verdieping

-  Oppervlakte ca. 67 m<sup>2</sup>
-  Balkon ca. 9 m<sup>2</sup>
-  1 slaapkamer
-  Privé berging ca. 5 m<sup>2</sup>
-  Parkeerplaats P5
-  Individuele warmtepomp
-  Vloerverwarming + topkoeling
-  4 zonnepanelen
-  Energielabel A+++
-  Complete badkamer met inloopdouche en separaat toilet
-  Exclusief keuken  
Keuken naar eigen wens in te richten
-  Mogelijkheid laadpunt



**Pepijn Thiele**  
T +31 6 21 29 58 14  
pthiele@storimansenpartners.nl

**Bart Kimenai**  
T +31 6 20 42 60 67  
bkimenai@storimansenpartners.nl



[WWW.YP-BREDA.NL](http://WWW.YP-BREDA.NL)