


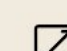
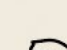
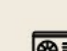
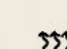



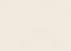



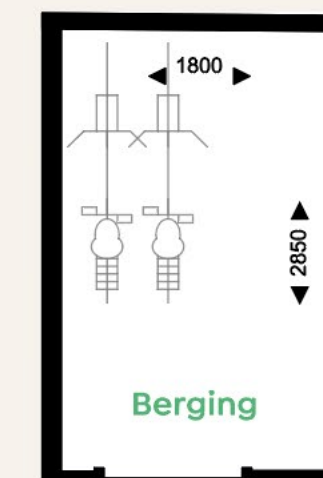
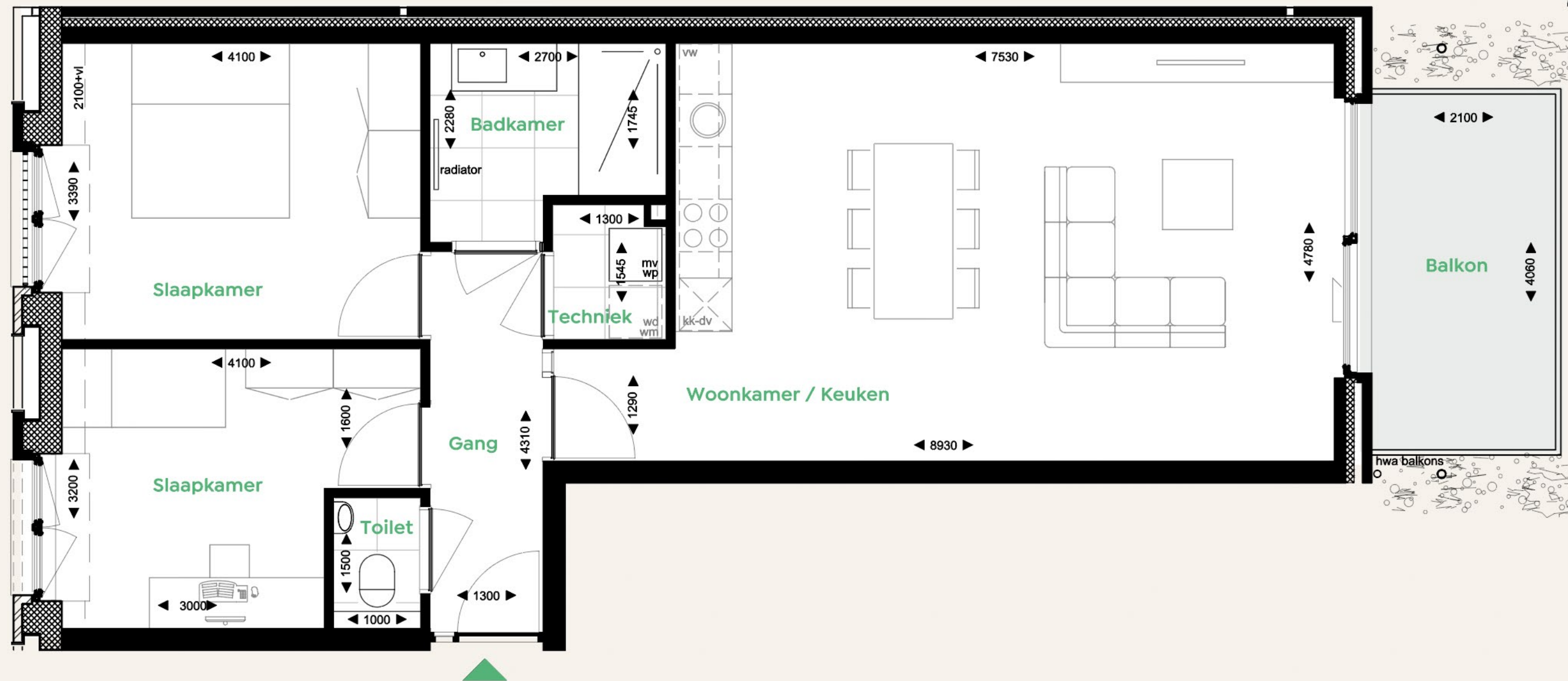
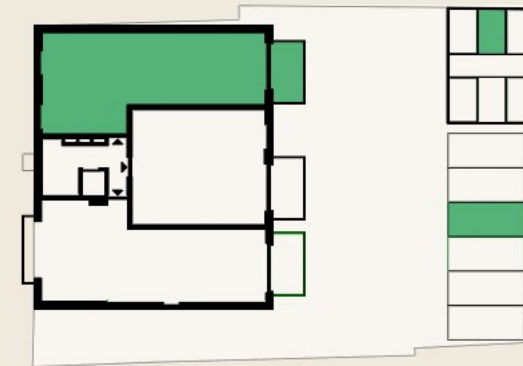
Kom jij
wonen in
De Yp?



Appartement Groot Ypelaardreef 12-B1

2e verdieping

-  Oppervlakte ca. 79 m²
-  Balkon ca. 9 m²
-  2 slaapkamers
-  Privé berging ca. 5 m²
-  Parkeerplaats P4
-  Individuele warmtepomp
-  Vloerverwarming + topkoeling
-  5 zonnepanelen
-  Energielabel A+++
-  Complete badkamer met inloopdouche en separaat toilet
-  Exclusief keuken
Keuken naar eigen wens in te richten
-  Mogelijkheid laadpunt



Pepijn Thiele
T +31 6 21 29 58 14
pthiele@storimansenpartners.nl

Bart Kimenai
T +31 6 20 42 60 67
bkimenai@storimansenpartners.nl



WWW.YP-BREDA.NL